

# Sorrento House & Land

Lot 136 Acacia Court, Moore Creek

## \$ 614,000.00



### INCLUSIONS

- + Land size 1056m<sup>2</sup>
- + Preliminary plans & Council Certification
- + Engineering & site costs
- + 2550mm ceiling height
- + Raft slab to suit H2 class site
- + Structural grade treated timber frame/trusses
- + Colorbond roof with sarking
- + Remote Panelift garage door
- + 22,500L round water tank
- + Aluminium windows with flyscreens
- + Reverse cycle ducted air-conditioner
- + 20mm Stone benches & soft close drawers to kitchen
- + Quality appliances
- + Carpet, laminate flooring & roller blinds throughout
- + Shelving to WIR & robes
- + Quality fixtures, tapware & accessories
- + Downlights throughout
- + TV antenna, clothesline & letterbox
- + Concrete driveway 60m<sup>2</sup>



*Your dream home at an affordable price*

[wjmhomes.com](http://wjmhomes.com)

(02) 6762 6860

[wjmhomes@bigpond.com](mailto:wjmhomes@bigpond.com)

# Sorrento House & Land

Lot 136 Acacia Court, Moore Creek



## Specifications

Internal:	248m <sup>2</sup>
Garage:	40m <sup>2</sup>
Porch:	6m <sup>2</sup>
Alfresco:	20m <sup>2</sup>
<b>TOTAL AREA:</b>	<b>314m<sup>2</sup></b>



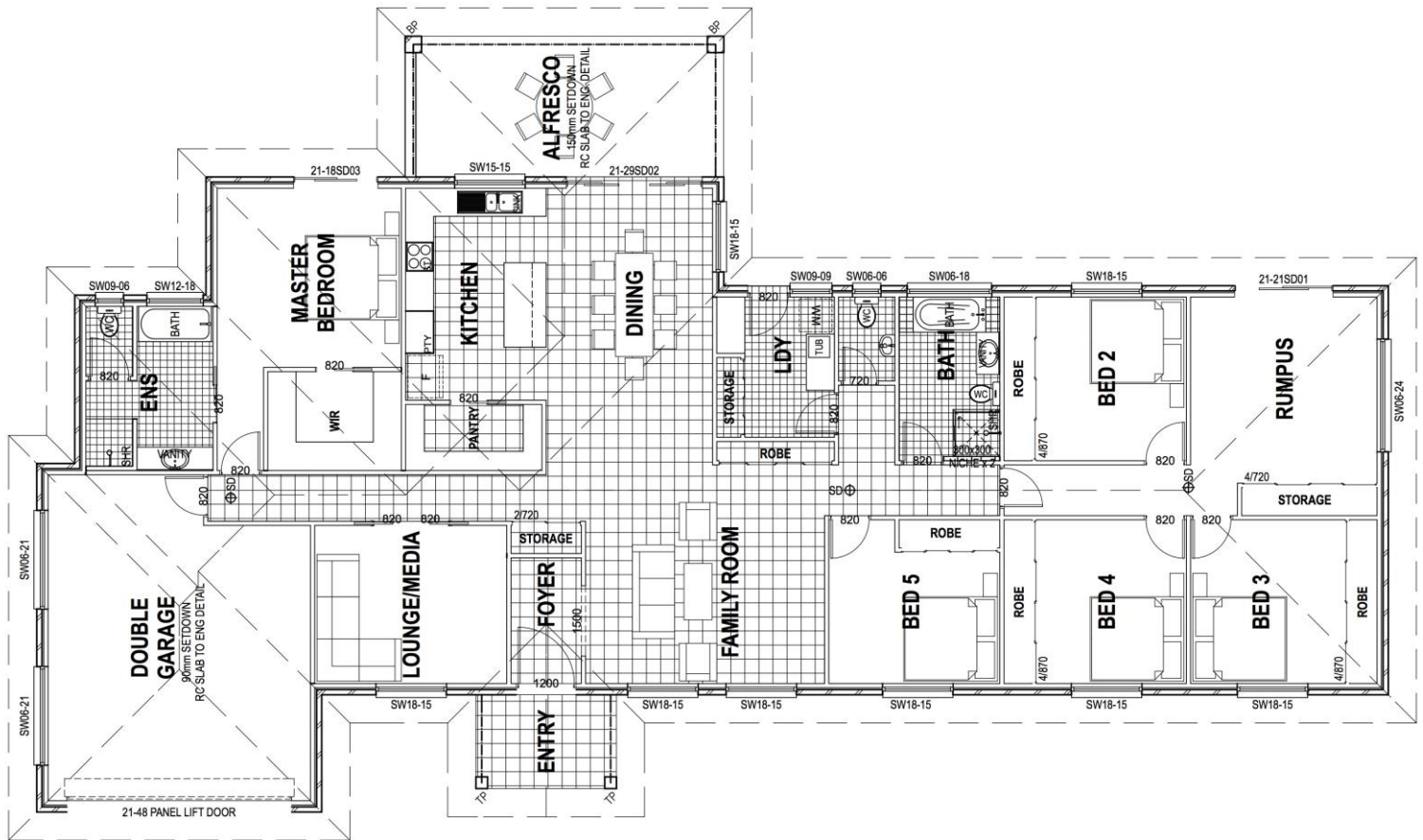
5



2



2.5



*Your dream home at an affordable price*

wjmhomes.com

(02) 6762 6860

wjmhomes@bigpond.com