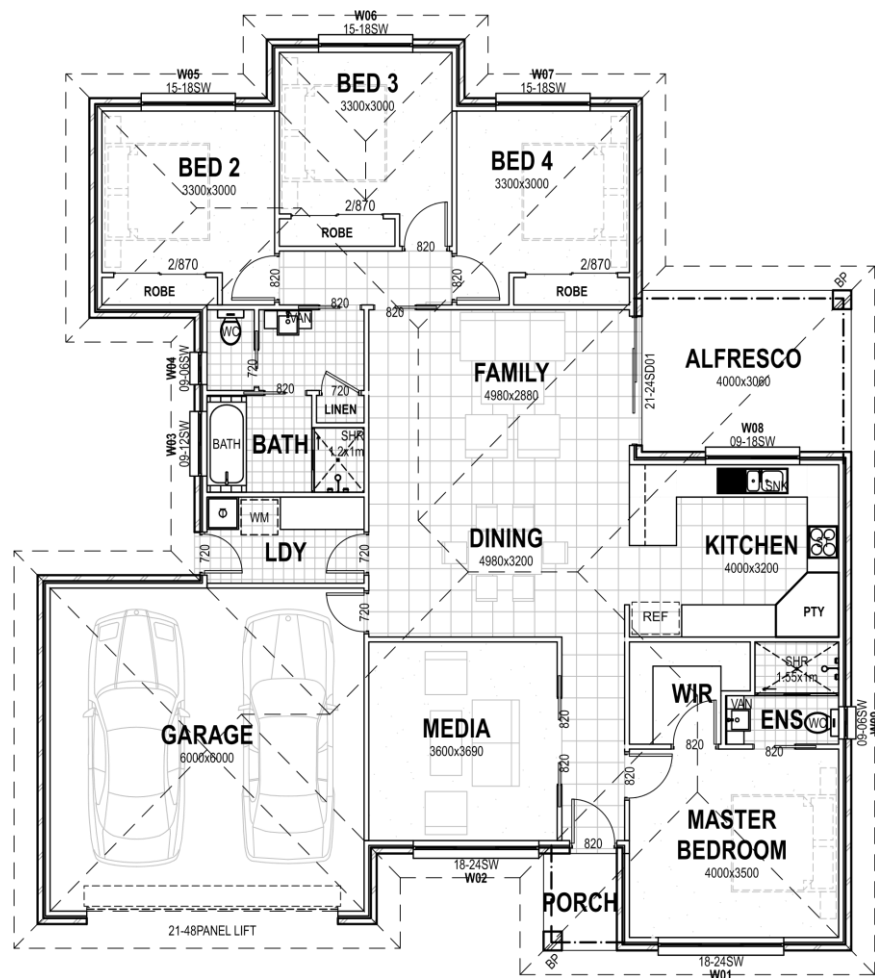




# Mangrove

The Mangrove is one of our more economical 4 bedroom plans, but still offers two living areas, ensuite and walk in robe off master bedroom. This innovative plan can also be mirror reversed, depending on the aspect of the block. The Mangrove also offers an alfresco area off the family room for all round enjoyment.



### Specifications

Internal:	154.1m <sup>2</sup>
Garage:	40m <sup>2</sup>
Porch:	2.5m <sup>2</sup>
Alfresco:	12m <sup>2</sup>
<b>TOTAL AREA:</b>	<b>208.6m<sup>2</sup></b>



*Your dream home at an affordable price*

wjmhomes.com  
 (02) 6762 6860  
 wjmhomes@bigpond.com