



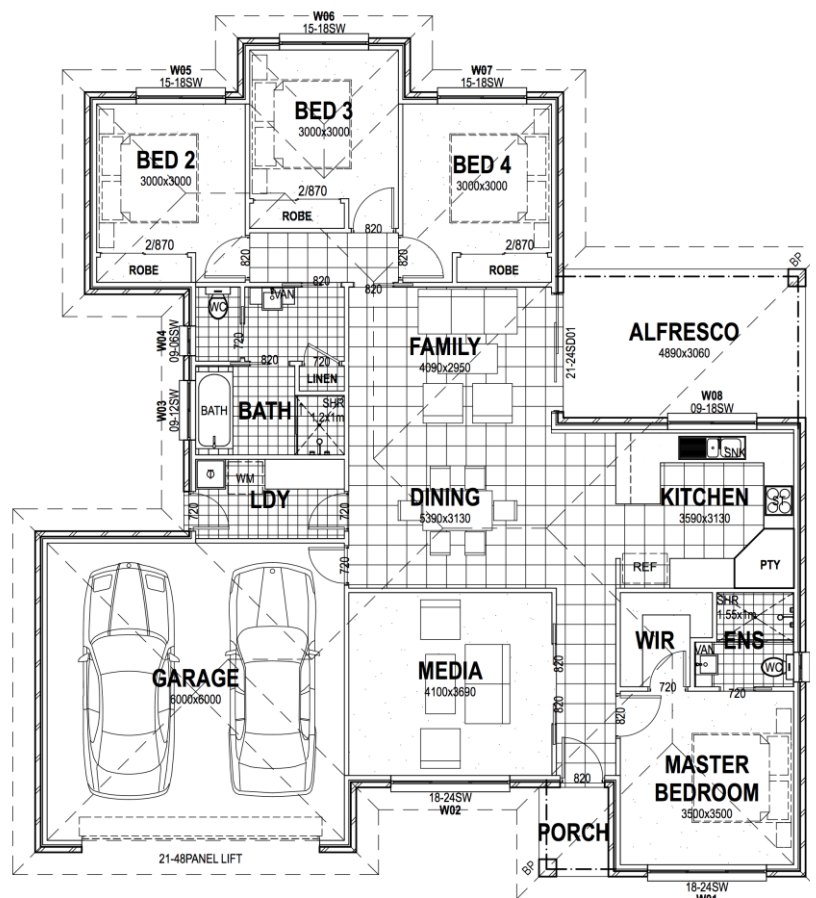
Phoenix

The Phoenix is one of our more economical 4 bedroom plans, but still offers two living areas, ensuite and walk in robe off master bedroom. This innovative plan can also be mirror reversed, depending on the aspect of the block. The Phoenix also offers an alfresco area, off the family room for all round enjoyment.



Specifications

Internal:	147.1m ²
Garage:	40m ²
Porch:	2.5m ²
Alfresco:	14.7m ²
TOTAL AREA:	204.3m²



Your dream home at an affordable price

wjmhomes.com

(02) 6762 6860

wjmhomes@bigpond.com