



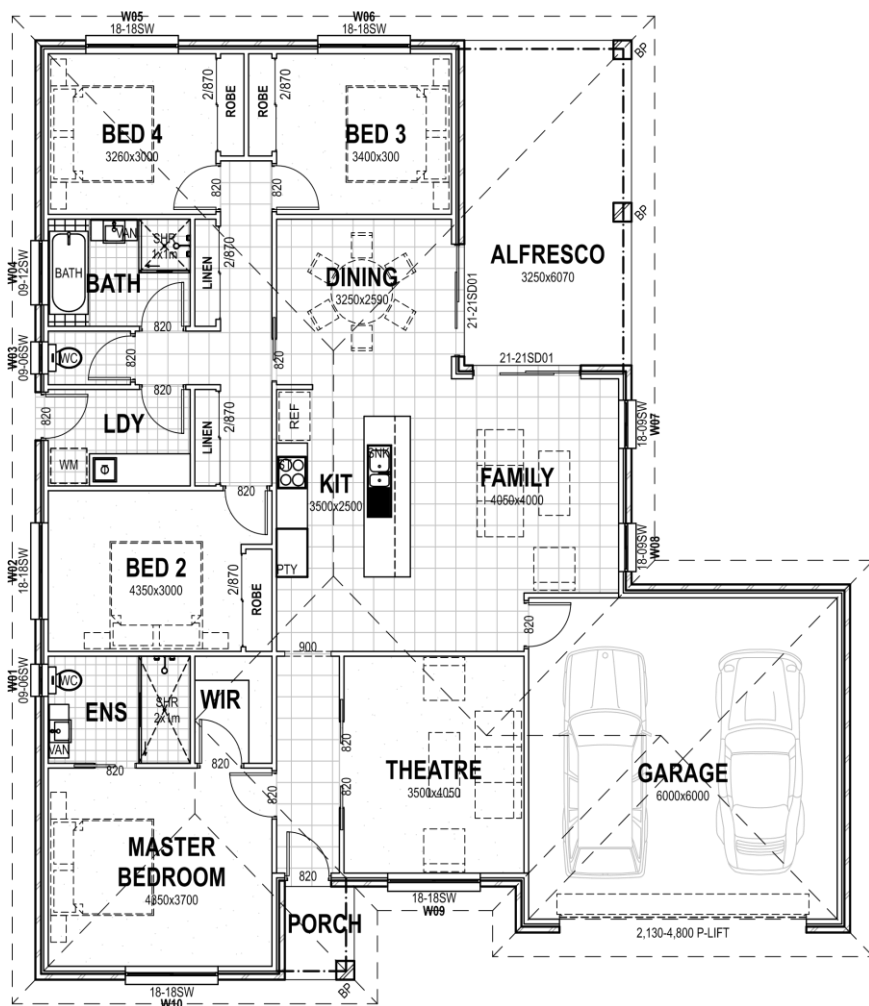
Savannah

The Savannah is one of our most efficient plans and ticks all the boxes for a first, second home buyer or investor. 4 bedrooms, ensuite, walk in robe, two living areas and alfresco make this plan a standout for the home buyer looking to build on a budget.



Specifications

Internal:	170m ²
Garage:	40.4m ²
Porch:	2.4m ²
Alfresco:	19.7m ²
TOTAL AREA:	232.5m²



Your dream home at an affordable price

wjmhomes.com

(02) 6762 6860

wjmhomes@bigpond.com