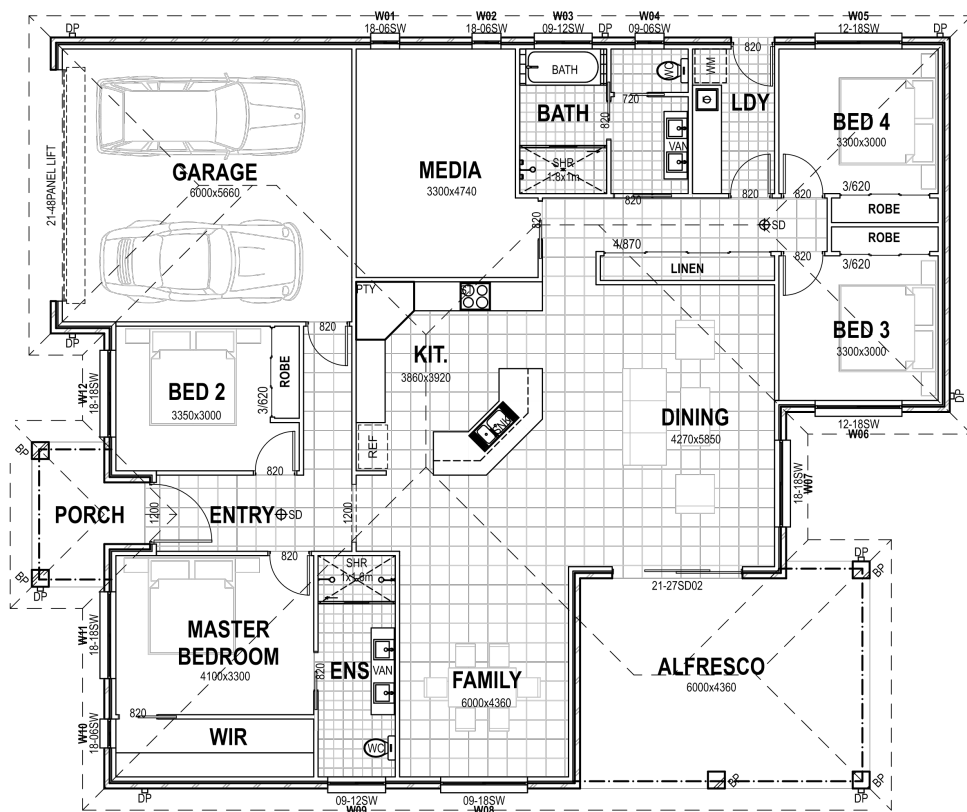




# Willow

The Willow is perfect for a square block with a wider frontage. It offers an open plan living and dining area, opening onto the alfresco for outdoor entertaining. It has a separate media/lounge room, double garage and generous master bedroom with ensuite and walk in robe.



## Specifications

Internal:	196.5m <sup>2</sup>
Garage:	36.6m <sup>2</sup>
Porch:	5.6m <sup>2</sup>
Alfresco:	26.8m <sup>2</sup>
<b>TOTAL AREA:</b>	<b>265.5m<sup>2</sup></b>



*Your dream home at an affordable price*

wjmhomes.com

(02) 6762 6860

wjmhomes@bigpond.com